

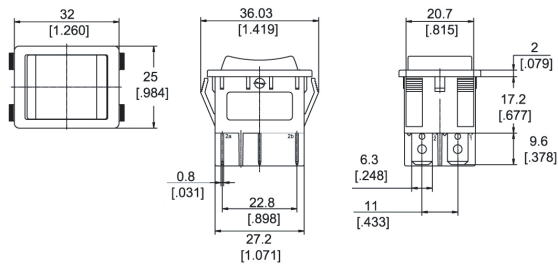
## R5 series Rocker Switches | R515KKETOFA

### Specification

Electrical Rating : 20A 125VAC / 16A 250VAC(UL)  
10A / 15A 16A 250VAC(VDE)  
10A 250VAC / 15A 125VAC(UL)  
MECHANICAL LIFE: Over 30,000 cycles.  
CONTACT RESISTANCE: 20Ω  
INSULATION RESISTANCE: 1,000VΩ  
STORAGE TEMPERATURE: -30°C to 85°C.  
Atmospheric humidity : max. 85%

### Part No.

• Shown : R515KKETOFA



Dimensions Image



No.80

ROCKER SWITCHES

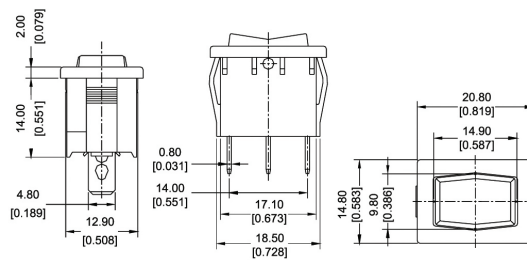
## RA(R19A) series Rocker Switches | R3

### Specification

MECHANICAL LIFE: Over 30,000 cycles.  
CONTACT RESISTANCE: 20Ω  
INSULATION RESISTANCE: 1,000VΩ  
STORAGE TEMPERATURE: -20°C to 85°C.  
Atmospheric humidity : max. 85%

### Part No.

• Shown : RA12KKFTOPF



Dimensions Image



No.81

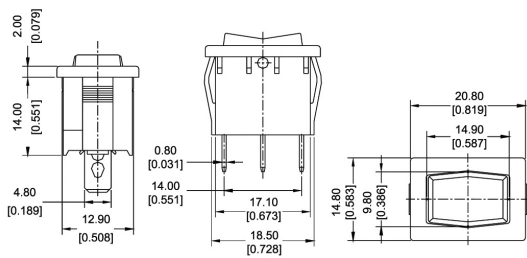
## RA(R19A) series Rocker Switches | R3

### Specification

MECHANICAL LIFE: Over 30,000 cycles.  
CONTACT RESISTANCE: 20Ω  
INSULATION RESISTANCE: 1,000VΩ  
STORAGE TEMPERATURE: -20°C to 85°C.  
Atmospheric humidity : max. 85%

### Part No.

• Shown : RA12KKFTOPF



Dimensions Image



No.82

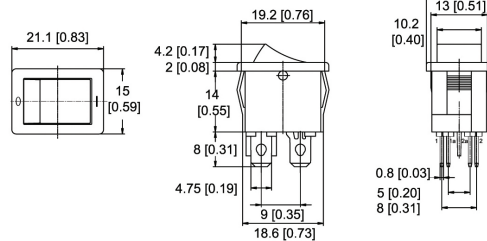
## R9(R19A) series Rocker Switches | R3

### Specification

MECHANICAL LIFE: Over 30,000 cycles.  
CONTACT RESISTANCE: 20Ω  
INSULATION RESISTANCE: 1,000VΩ  
STORAGE TEMPERATURE: -30°C to 85°C.  
Atmospheric humidity : max. 85%

### Part No.

• Shown : R912KKETO0F1



Dimensions Image



No.83

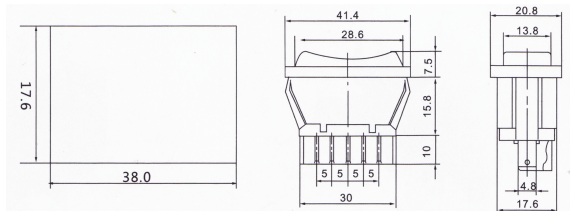
## ASW series Rocker Switches

### Specification

MECHANICAL LIFE: Over 30,000 cycles.  
CONTACT RESISTANCE: 20Ω  
INSULATION RESISTANCE: 1,000VΩ  
STORAGE TEMPERATURE: -30°C to 85°C.  
Atmospheric humidity : max. 85%

### Part No.

• Shown : ASW-01



Dimensions Image



No.84

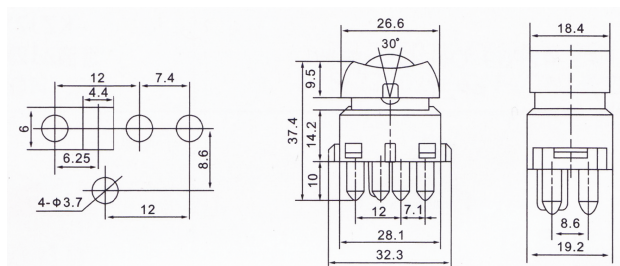
## ASW series Rocker Switches

### Specification

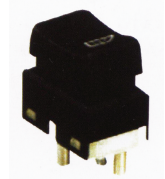
MECHANICAL LIFE: Over 30,000 cycles.  
CONTACT RESISTANCE: 20Ω  
INSULATION RESISTANCE: 1,000VΩ  
STORAGE TEMPERATURE: -30°C to 85°C.  
Atmospheric humidity : max. 85%

### Part No.

• Shown : ASW-03



Dimensions Image



No.85